



Hirth-Information

Mitteilung-Nummer:

0060/2N

Inhalt:

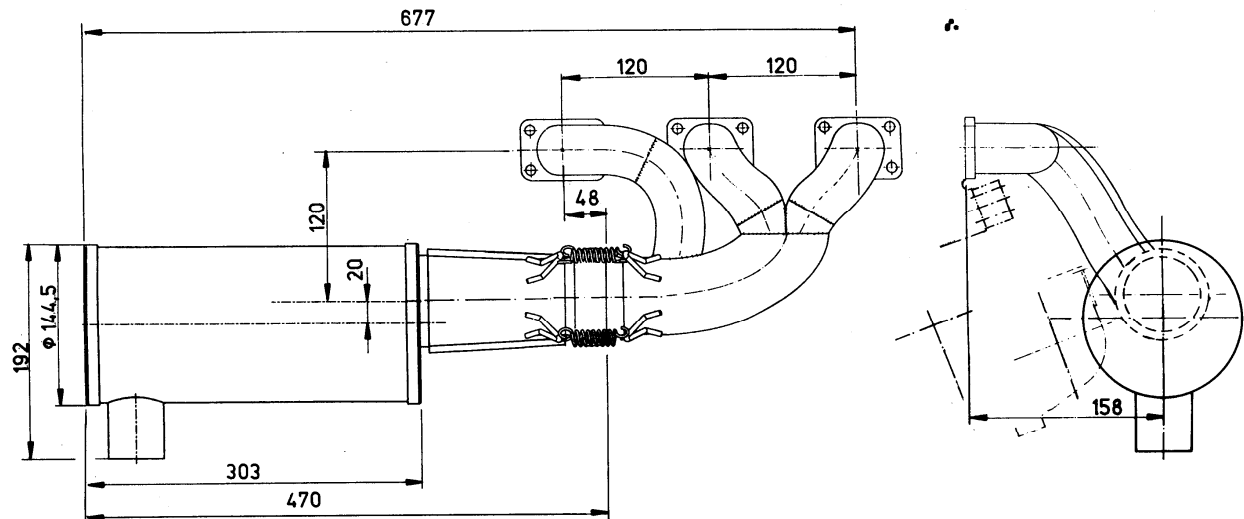
Exhaust system over view
(3-cylinder engine)

Datum:

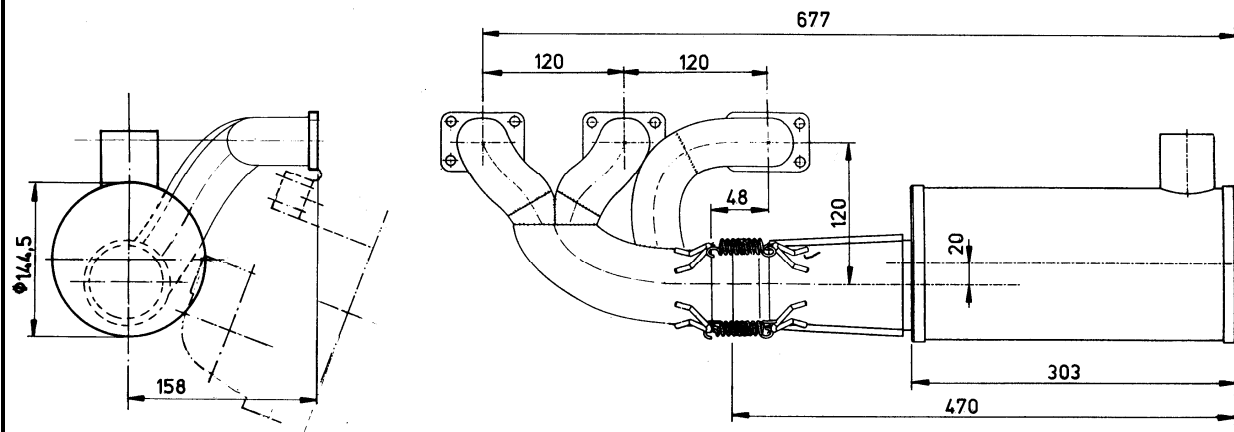
04.07.2002

Basic version:

Version 1a (straight version):

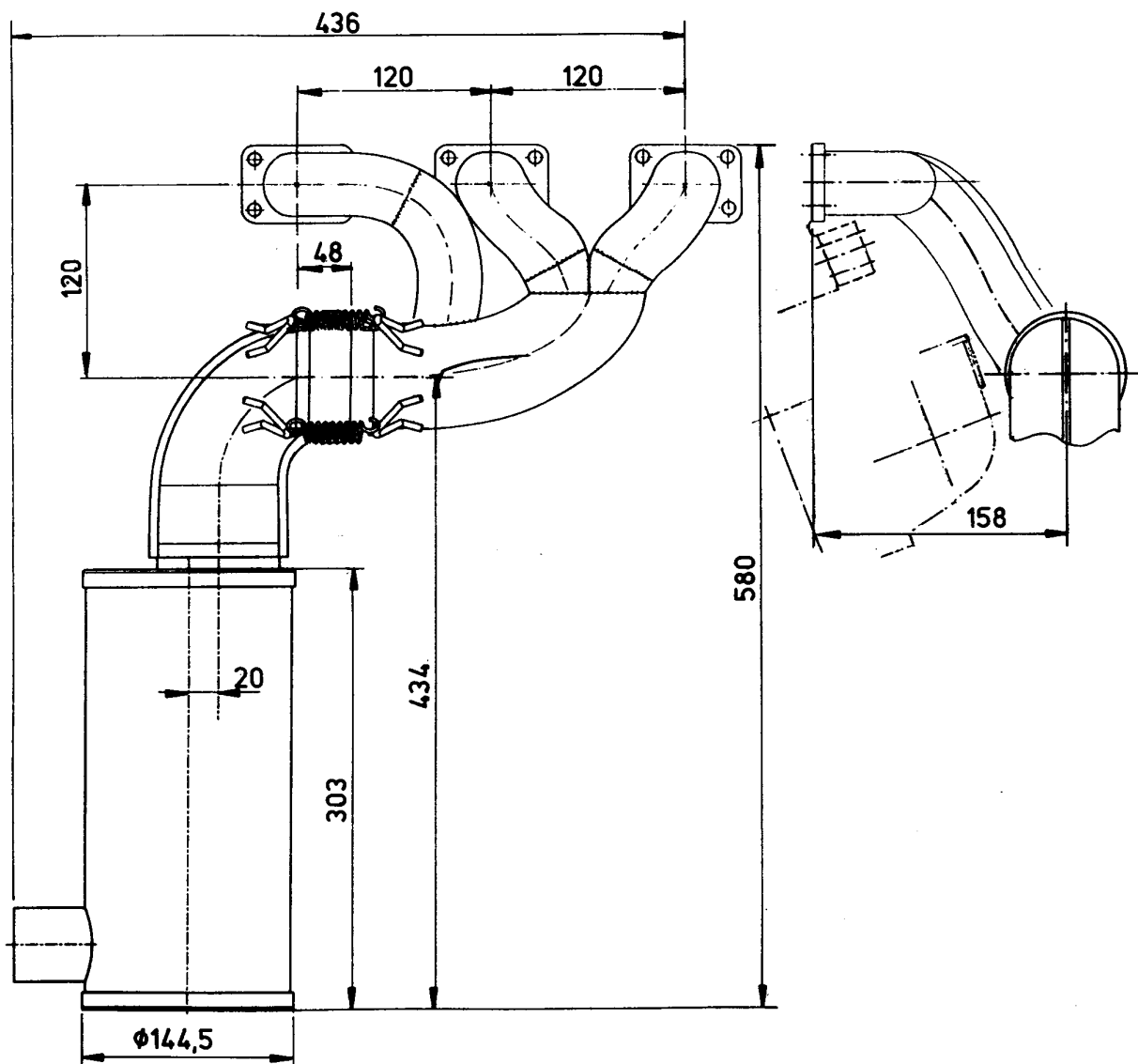


Version 1b (straight version):

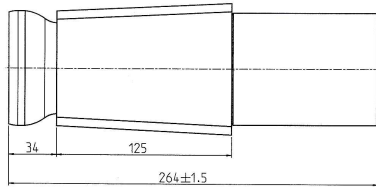


Note: the difference between version 1a and 1b are the outlet manifolds 378A2U und 378C2U being positioned in opposite.

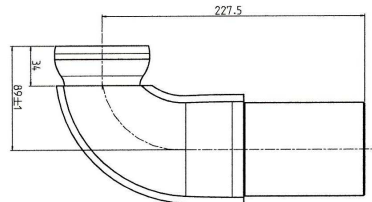
Version 2a (90° version):



**378 A13U inlet pipe, complete
weight: 1,5 kg**



**378 A15U bow 90°, complete
weight: 1,4 kg**



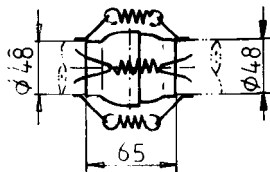
F308 A4 loop



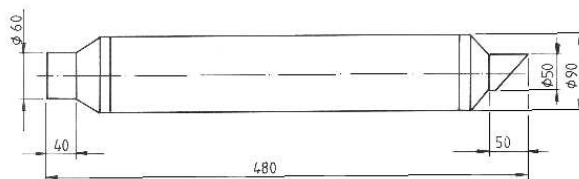
54.1 spring



**378 A4U ball bearing
weight: 0,26 kg**



**018.10/30 rear silencer
weight: 1,1 kg**



exhaust system basic versions in correspondence to engine model:

3701 (74kW (100hp)-version):

	Var. 1a	1x	378 A2U	outlet manifold (left)	
		1x	378 A13U	inlet pipe (straight)	l = 0 mm
		1x	378 T4U	exhaust muffler, complete	
or	Var. 1b	1x	378 C2U	outlet manifold (right)	
		1x	378 A13U	inlet pipe (straight)	l = 0 mm
		1x	378 T4U	exhaust muffler, complete	
or	Var. 2a	1x	378 A2U	outlet manifold (left)	
		1x	378 A15U	bow (90°)	l = 0 mm
		1x	378 T4U	exhaust muffler, complete	
or	Var. 2b	1x	378 C2U	outlet manifold (right)	
		1x	378 A15U	bow (90°)	l = 0 mm
		1x	378 T4U	exhaust muffler, complete	

H 37 (66,6 kW (90,6 PS)):

For the engine H 37 are only the variants 2a and 2b in the following configuration available:

	Var. 2a	1x	378 A2U	outlet manifold (left)	
		1x	378 A15U	bow (90°)	l = 90 mm
		1x	378 T4U	exhaust muffler, complete	
or	Var. 2b	1x	378 C2U	outlet manifold (right)	
		1x	378 A15U	bow (90°)	l = 90 mm
		1x	378 T4U	exhaust muffler, complete	

For the mounting of the rear silencer 018.10/30 to the engine H 37 the connecting bow 378 S8U (no picture) is needed.

Please note that the claimed performance of engine can't be guaranteed if an exhaust system is used which is differing to one of the 2 basic versions (see page 1). Resulting from any modifications or changes of the exhaust system the engine might be damaged and in this case we are not obliged for any warranty or guarantee.

The length l = 0 mm stated for the engine 3701 (74 kW / 100 hp) means that the cone pipe (378A13U or 378A15U) is completely slipped in into the muffler (378T4U). The lengths differing from null refer to the spaces stated as "l" in the sketches.

