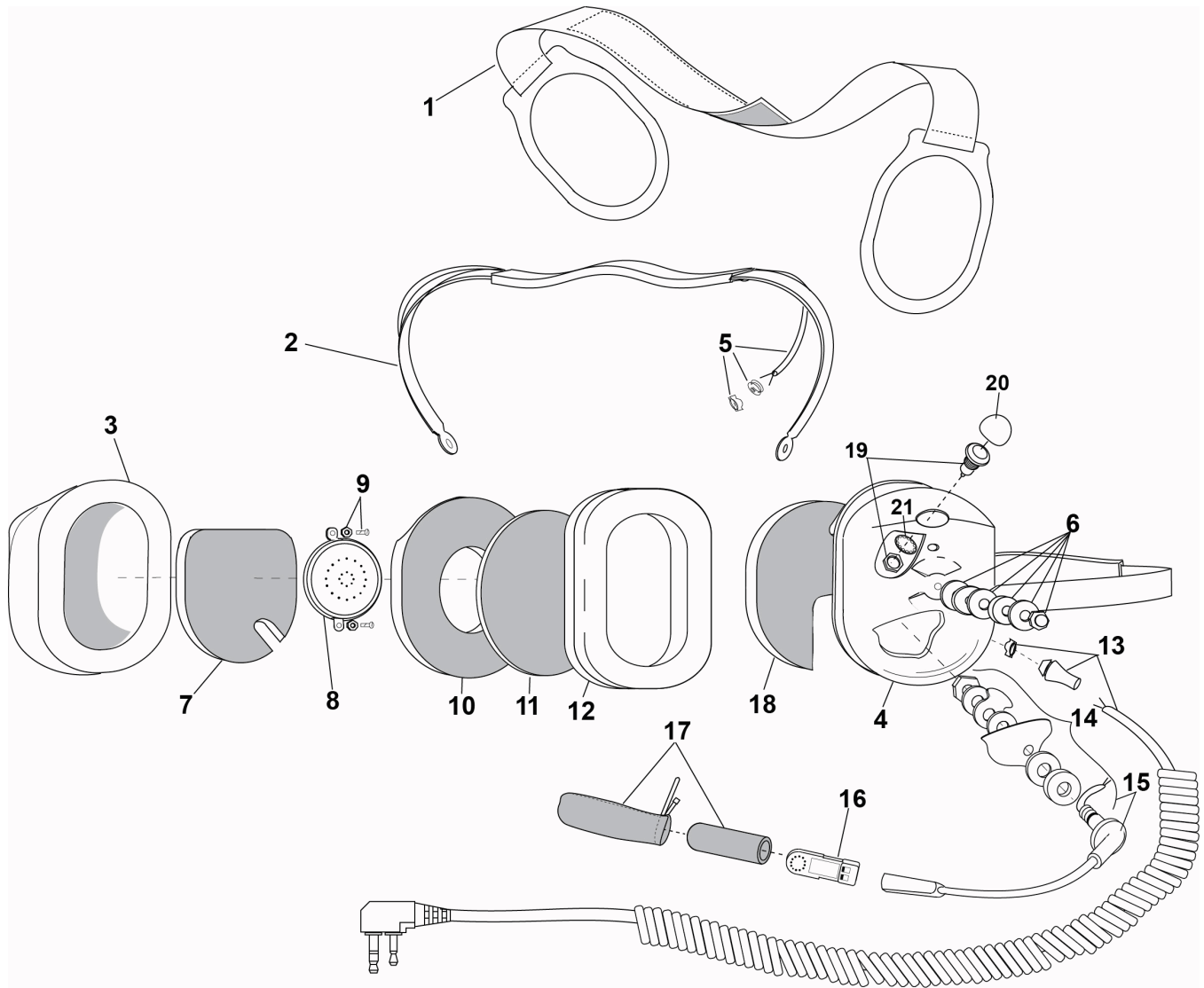


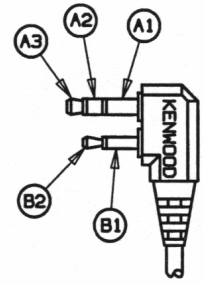
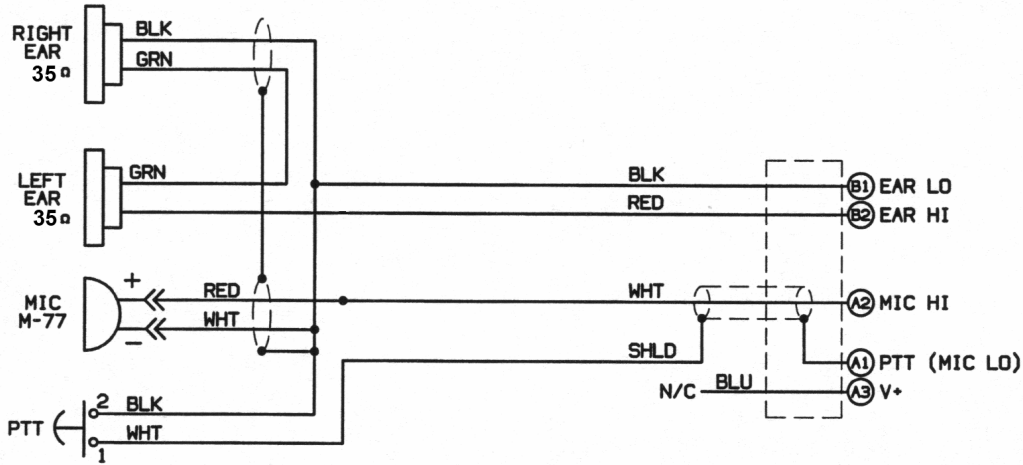
PARTS LIST
MODEL H6240-24



No.	Description	Part No.
1	Support Assembly	10370G-03
2	Spring Assembly	10117G-97
3	Dome, Right	15522P-03
4	Dome, Left (mic. side)	15522P-32
5	Overhead Cord Kit	22607G-01
6	Nut and Washer Kit (10 pk)	12052G-02
7	Dome Filter (1 each)	11410P-02
8	Earphone Assembly	10376G-55
9	Screw/Grommet Kit (4 pk)	18900G-47
10	Dome Filter (1 each)	25629P-05
11	Filter (1 each)	14096P-09

No.	Description	Part No.
12	Undercut Gel Earseal (pair)	40863G-02
13	Comm Cord Assy Kit	41080G-15
14	Boom Attachment Kit	12840G-19
15	Kit, Boom Assembly w/Att.	41090G-12
16	M-77 Electret Mic	09168P-35
17	Mic Protector/Windscreen	41090G-05
18	Dome Filter (1 each)	15545P-01
19	Switch, PTT	09851P-51
20	Sealing Boot, PTT Switch	13145P-18
21	Lock Washer (10/pk)	41090G-06

ELECTRICAL SCHEMATIC MODEL H6240-24



EXTERNAL PIN VIEW
E30-2127-08