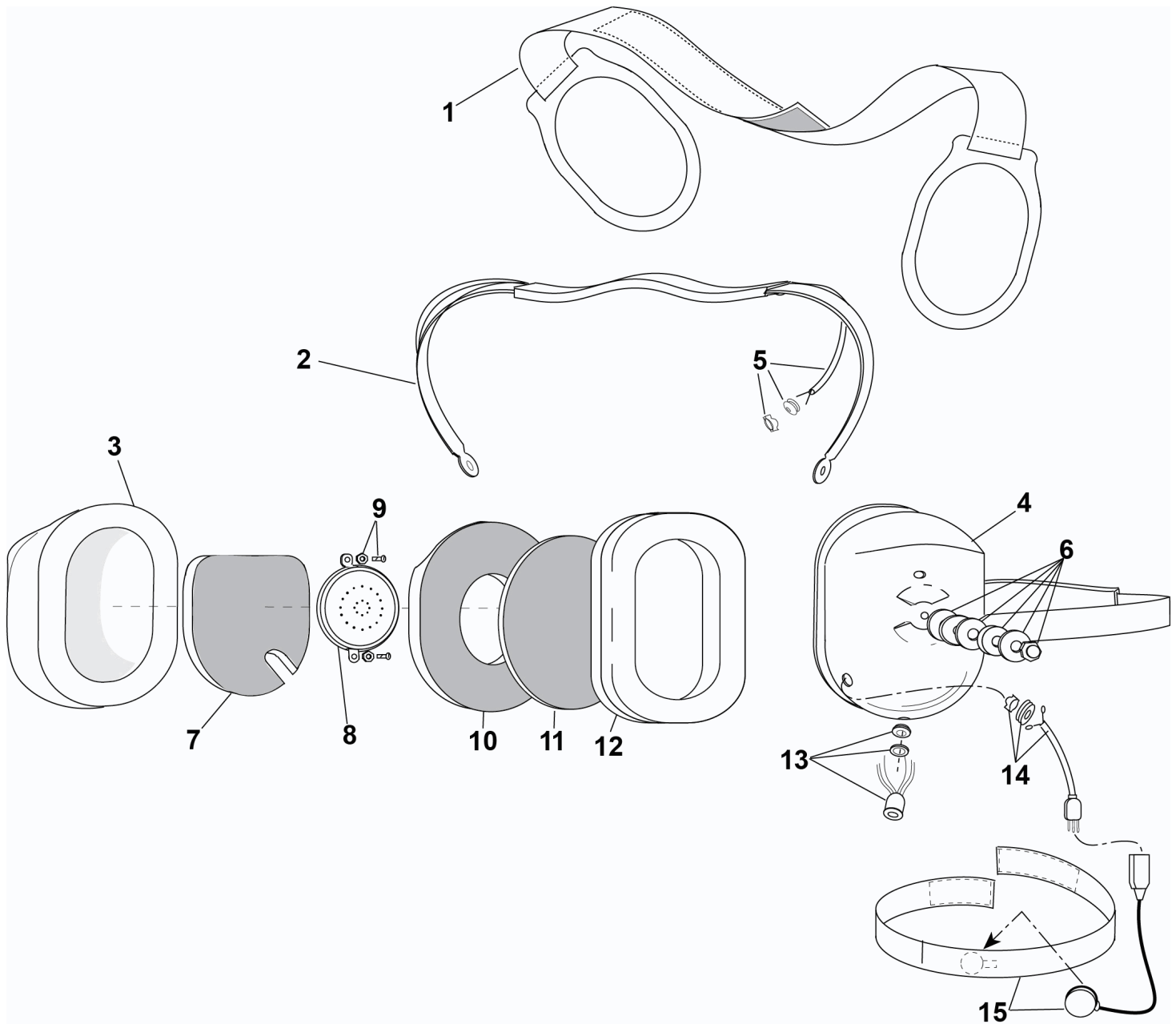




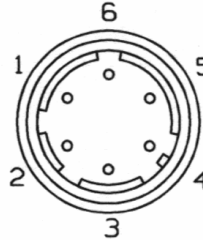
PARTS LIST
MODEL H6245-M



No.	Description	Part No.
1	Support Assembly	10370G-03
2	Spring Assembly	10117G-97
3	Dome, Right	15522P-03
4	Dome, Left (Mic Side)	15522P-47
5	Overhead Cord Kit	22607G-01
6	Nut and Washer Kit (10 pk)	12052G-02
7	Dome Filter (1 each)	11410P-02
8	Earphone Assembly	10376G-55

No.	Description	Part No.
9	Screw (4/pk)	18900G-47
10	Dome Filter (1 each)	25629P-05
11	Filter (1 each)	14096P-09
12	Undercut Gel Earseal (pair)	40863G-02
13	Connector w/Wires	18818G-05
14	Microphone Jack Cord Assembly	18804G-17
15	Throat Mic w/Neck Band Assembly	18882G-08

ELECTRICAL SCHEMATIC MODEL H6245-M



CONNECTOR
SR310-10R-6S
EXTERNAL SOCKET VIEW

