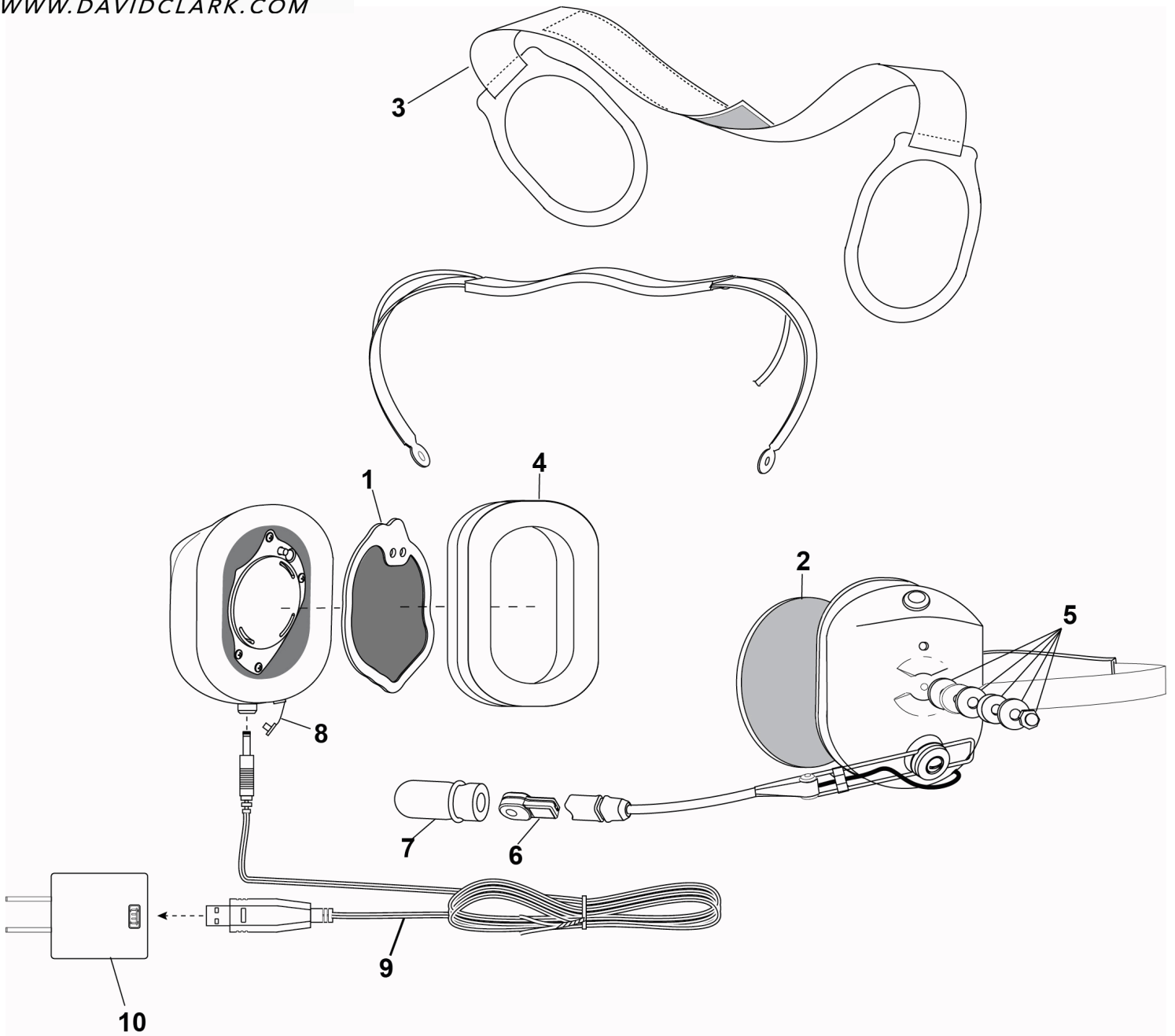


**PARTS LIST
MODEL HBT-40**



No.	Description	Part No.
1	Filter (Right)	15512P-05
2	Filter (Left)	15512P-03
3	Support Assembly	10370G-03
4	Undercut Gel Earseal (pair)	40863G-02
5	Nut & Washer Kit (10/pk)	12052G-03

No.	Description	Part No.
6	Microphone M-5	09168P-66
7	Mic Protector	40062G-05
8	Dust Cap	13238P-28
9	Charger Cable	09923P-44
10	AC/DC Adapter	09525P-25

ELECTRICAL SCHEMATIC MODEL HBT-40

Quick Start Guide

The HBT-40 is designed for a simple and comfortable fit. Proper fit of this device is critical to its noise attenuation effectiveness and stability on the head. Be sure to adjust overhead support strap until it rests comfortably on top of your head. Move the earcups slightly up or down or from side to side until you feel you have maximum attenuation.

The use of eyeglasses will reduce the attenuation afforded by this device. Use "Stop Gaps", P/N 12500G-02; they are inexpensive and effective in restoring some of the attenuation.

Ideal microphone placement is 1/8" from the lips as this will provide maximum intelligibility and ambient noise rejection. For proper microphone placement, adjust boom up/down and in/out by rotating and flexing the boom as necessary.

- First Use
 - o The DC Bluetooth Headset must be enabled by a slide switch inside the non-mic side dome prior to first use. It is necessary to remove the filter to see the slide switch. The slide switch will need to be in the up position. This will be the only time it is necessary to operate this switch.

- Pairing
 - o On/Off pairing button (inside dome)
 - o Press & Hold for On/Off until tone heard
 - o Press once for pairing mode. Light goes Red + Blue alternating
 - o Follow the standard pairing procedure for your smartphone, tablet or other Bluetooth device; see the manual for full details.

- Play/Pause-Answer/hang up (button outside of ear cup)
 - o First press to answer call (Play)
 - o Second press to disconnect the call (Pause)
 - o Press and hold to call back the last called

Replaceable Parts Removal/Installation

- M-55 Microphone (09168P-66) and Microphone protector (40062G-05)
 - o To remove: Gently pull off foam cover. Grasp microphone firmly and pull straight out.
 - o To install: Align keyway on microphone with keyway on boom. "TALK" should be inward towards the user's face. Push until microphone snaps into place.

- Earseals (40863G-02)
 - o To remove: Gently pull off.
 - o To install: Stretch earseal over lip on dome until completely seated on dome.